

What does Alicia Do?

Alicia.ohare@mn.nacdnet.net

763-614-2919



Swimmable and Fishable

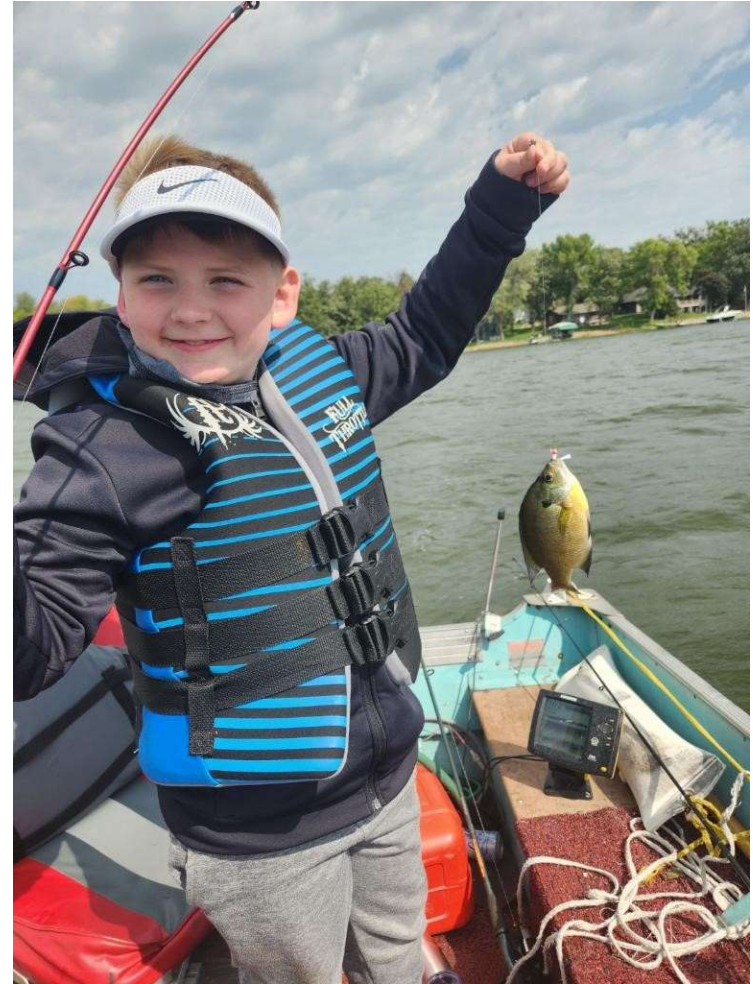
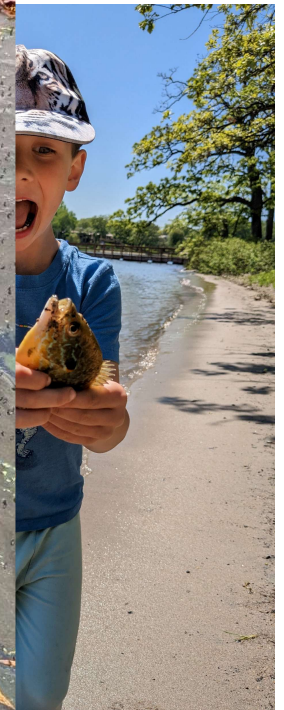


Photo Contest 2023

Not necessarily water ski-able



Sports Events Media Group



Dean Lake 2024

Lake Feasibility Study

- ✓ Subwatershed Assessment
- ✓ 2 years advance water quality measurements
- ✓ Carp Population Assessment
- ✓ Sediment Cores
- ✓ Curly-leaf pondweed
- ✓ Point-intercept survey

\$26,000

Lakes with Studies

Ann

Beebe**

Brooks*

Camp*

Dean**

French*

Granite*

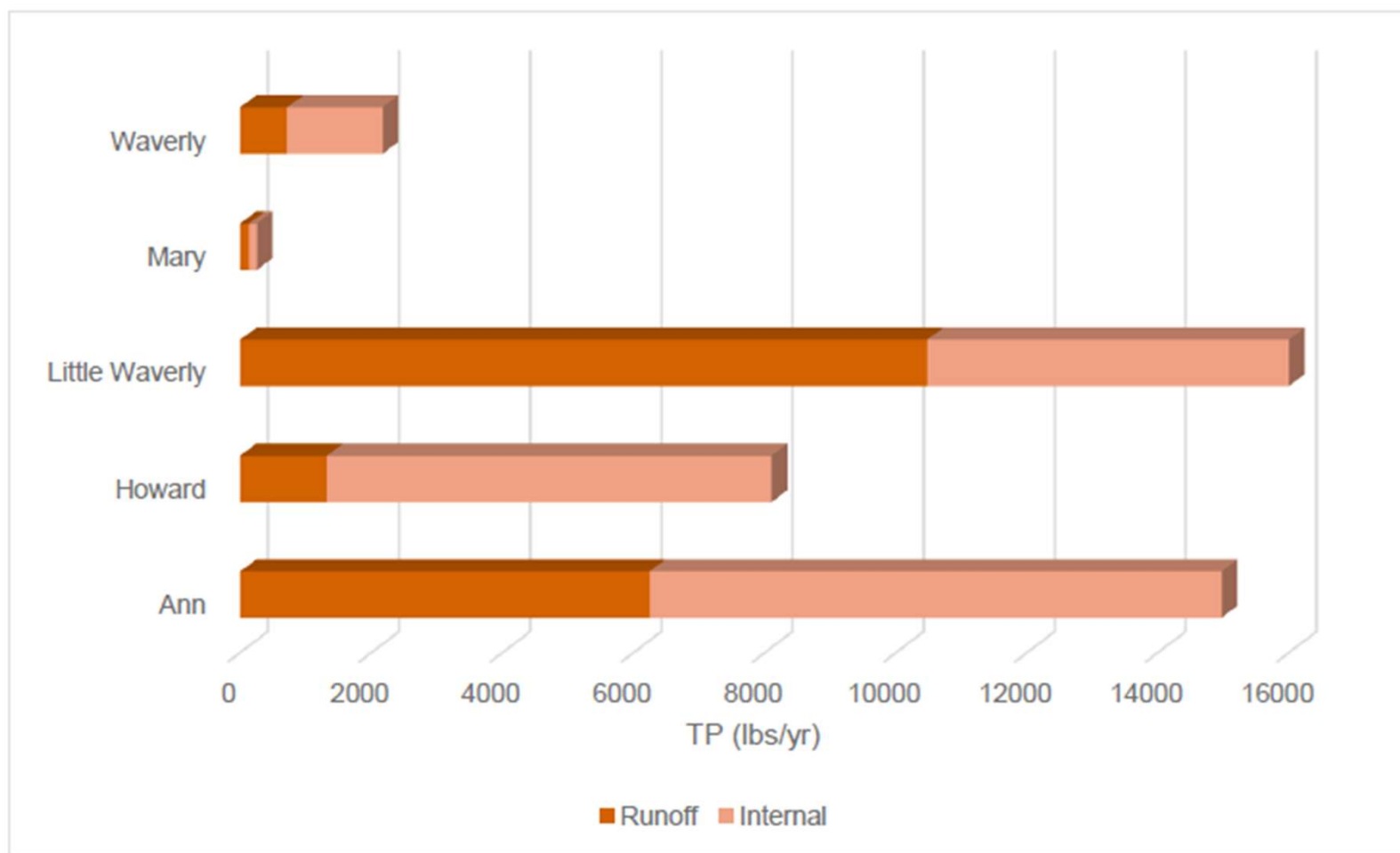
Howard

Little
Waverly

Mary

Martha**

Waverly



Carp Removal

- High maintenance
- Hard to scale down
- Living animal
- If ignored reduces impact of other actions



Curly-leaf Pondweed Treatment

- Data gaps
- Limited funding
- High maintenance
- Scalable



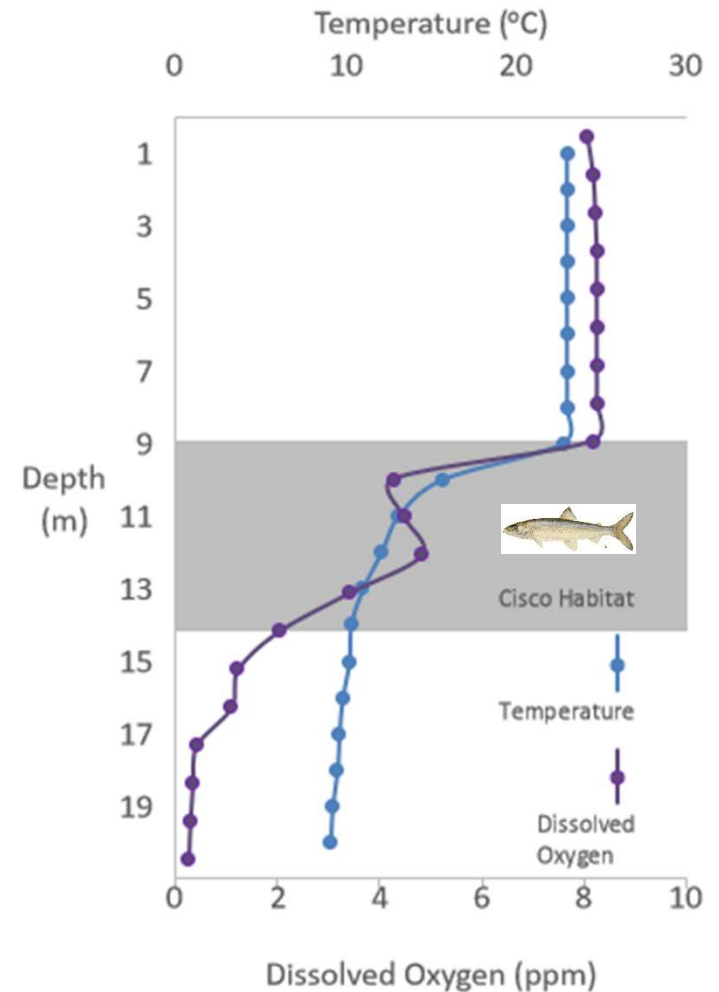
Alum

- Immediate results
- Well-documented
- Expensive
- Matters how much external

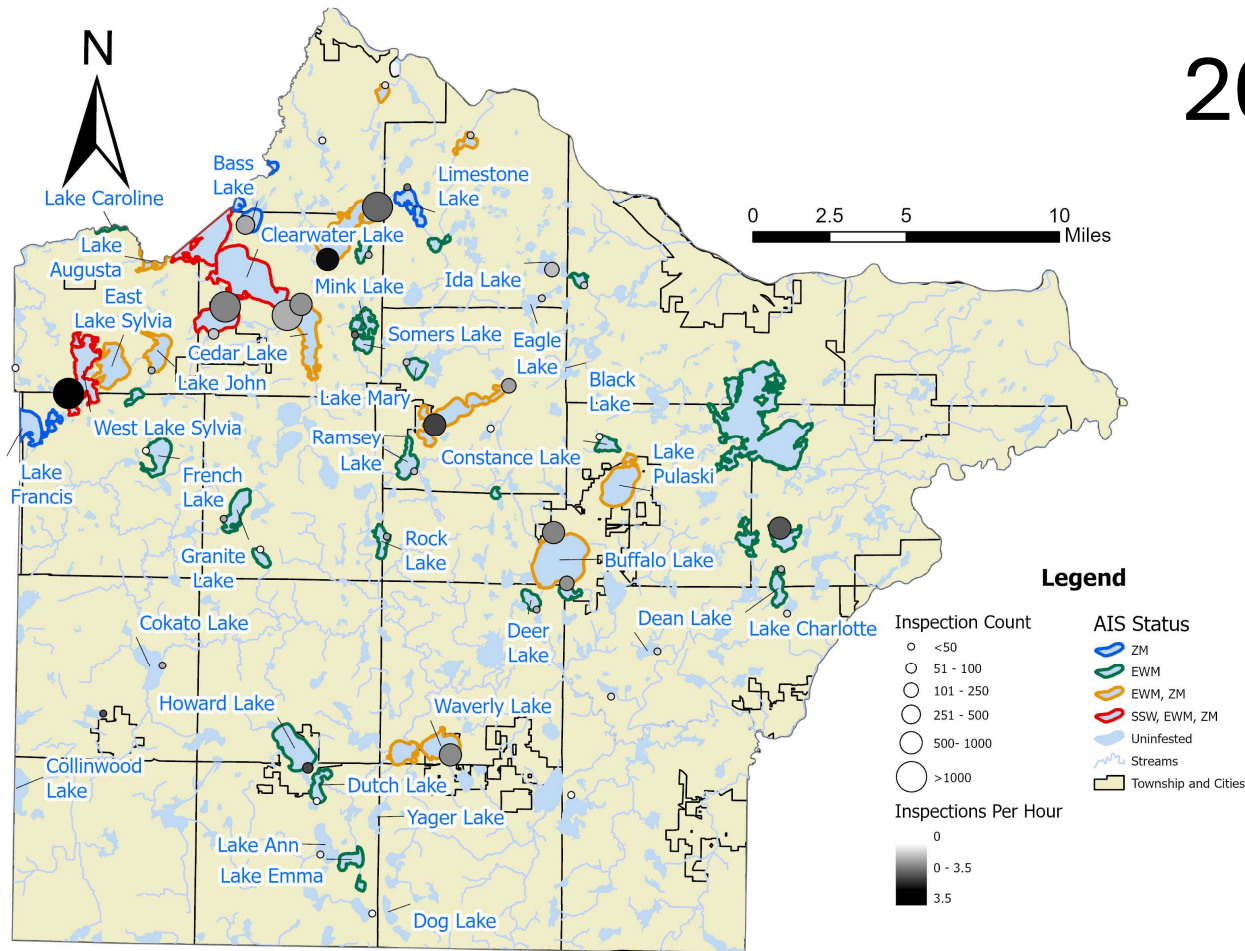


Coldwater Lakes

- East and West Clearwater
- Augusta
- Pleasant
- Cedar
- Sugar
- East and West Sylvia



2024 AIS Program



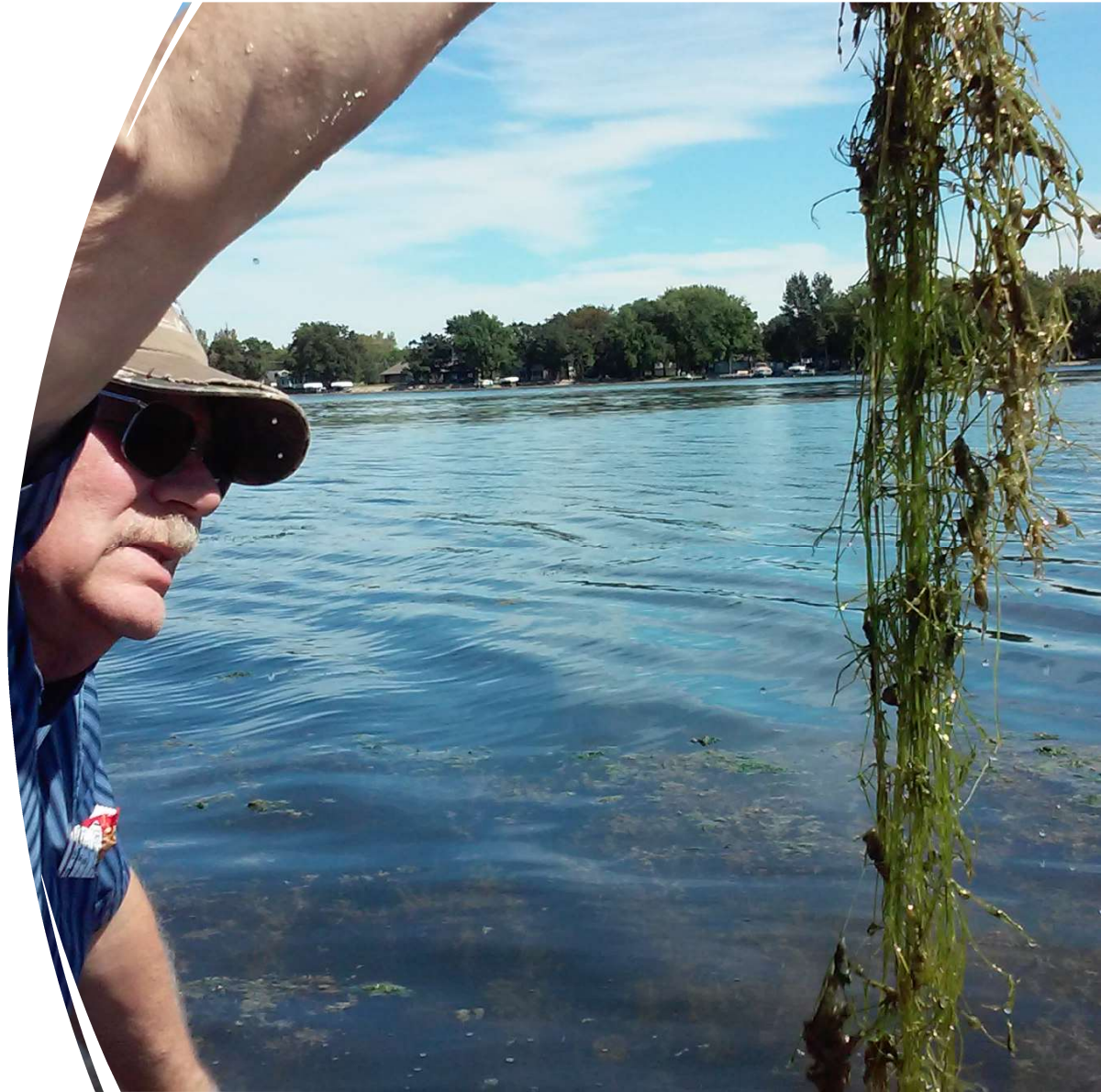
- \$60,505.60 Treatment grant awards
 - 90% cost-share on SSW and new species
- 18,002 inspections

Zebra Mussel Hunting



2025 AIS Activities

- 7600 hours contracted
- Decon open Memorial Day to Labor Day
- Working with fishing tournaments





Citizen Lake Monitoring Notes

- Let Alicia know if you need equipment
- There is a specific spot!
- Sampling can start 12pm Sundays
- Take pictures!
 - Submit to Photo Contest!
 - Win Prizes!

To find out what my colleagues do...

Sign up for our
newsletter!



Wrightswcd.org/newsletter

