



Leave AIS at the Launch

Boat Launch Cleaning Stations

Part 2

May 3, 2025





AIS Prevention

Top priority of Lake Associations
Only so many levers to pull

- Contract Launch Inspections
- Volunteer Inspections
- Law Enforcement
- **Education**





So why worry about AIS?

Aquatic Invasive Species (AIS) are species that are not native to Minnesota and can greatly diminish the health of a lake, harm the environment and negatively impact human health.

Examples: Eurasian Watermilfoil, Starry Stonewort, Zebra Mussels, etc.

In the last 30 years:

- **53 Wright County Lakes have at least one AIS infestation**
- **18 have both Eurasian Watermilfoil AND Zebra Mussels**
- **3 Starry Stonewort infestations**





Association of Cass County Lakes (ACCL) Initial program – 2023

- Presentation at the MN COLA Meeting – 10/23
- Looking for additional tools for Prevention/Education
- 5 county survey/Tool recommendations
- DNR Sign design/approval
- Sign placement
- Cass Soil & Water Conservation District





Initial program with Association of Cass County Lakes (ACCL) – 2023

Cass County

131 Lake access points

55 Installations as of Sept 1

Goal is additional 45 in 2024

Significant increase in compliance
Education!!!





Kicking it off in Wright County

“Why can’t we do that here?”

- Bass Lake Board - Connie Crane, Linda Strom, John Fitzgerald
- Kathy Jonsrud – Wright County COLA and MN COLA
- DNR – Parks and Trails Dept.
- Alicia O’Hare – Wright SWCD

Five pilot locations in Wright County installed in 2024:

Bass Lake Beebe Lake Howard Lake Lake Ida Lake John

Nine more in process:

Cedar Buffalo (3) Pulaski
Deer Lake Waverly (2) Birch Lake





What is included?

DNR Approved Sign w/Eye bolts for tools
Tools/Hardware Bundle
Post

Tools

Buster Wrench to remove drain plugs



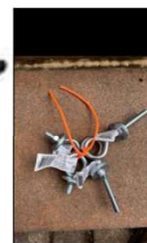
Aqua Weed Stick (48")
to remove weeds from
the boat and trailer



20" Long Handle Brush
to remove weeds from
the boat and trailer



Hardware Bundle



Grabber Tool



Cleaning Station

Clean your boat, trailer and gear.

Drain all water and keep drain plugs out during transport.

Thank you for doing your part to prevent the spread of invasive species and protecting our lakes and rivers!

FREE decontamination locations at:
mndnr.gov/decon

Please replace tools when you are finished.

Launch owner or lake association will be responsible for replacement tools.





Wright County Goals

70 Lake access points

5 Pilot Installations in 2024

Additional 25 in 2025

WE ARE ALL IN THIS TOGETHER

Cost is only \$150 per package. Wright SWCD will purchase the inventory and charge back for each package.





Wright County Access Points

Multiple types of launches

- **DNR** – 38
- **Other** – City, Township, County, Private – 30+
- DNR sites require a Special Use Permit (SUP)
- Non-DNR do not require the SUP but you will need to get “owner” permission to install a sign.

Wright SWCD will hold a countywide SUP from the DNR





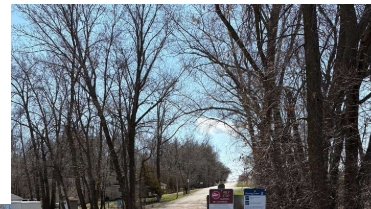
Where is the best installation location?

That depends...

Where are boaters most likely to stop and tie down their boat as they exit?

Free Standing vs Affix to an existing sign

How much room do you have at the launch?







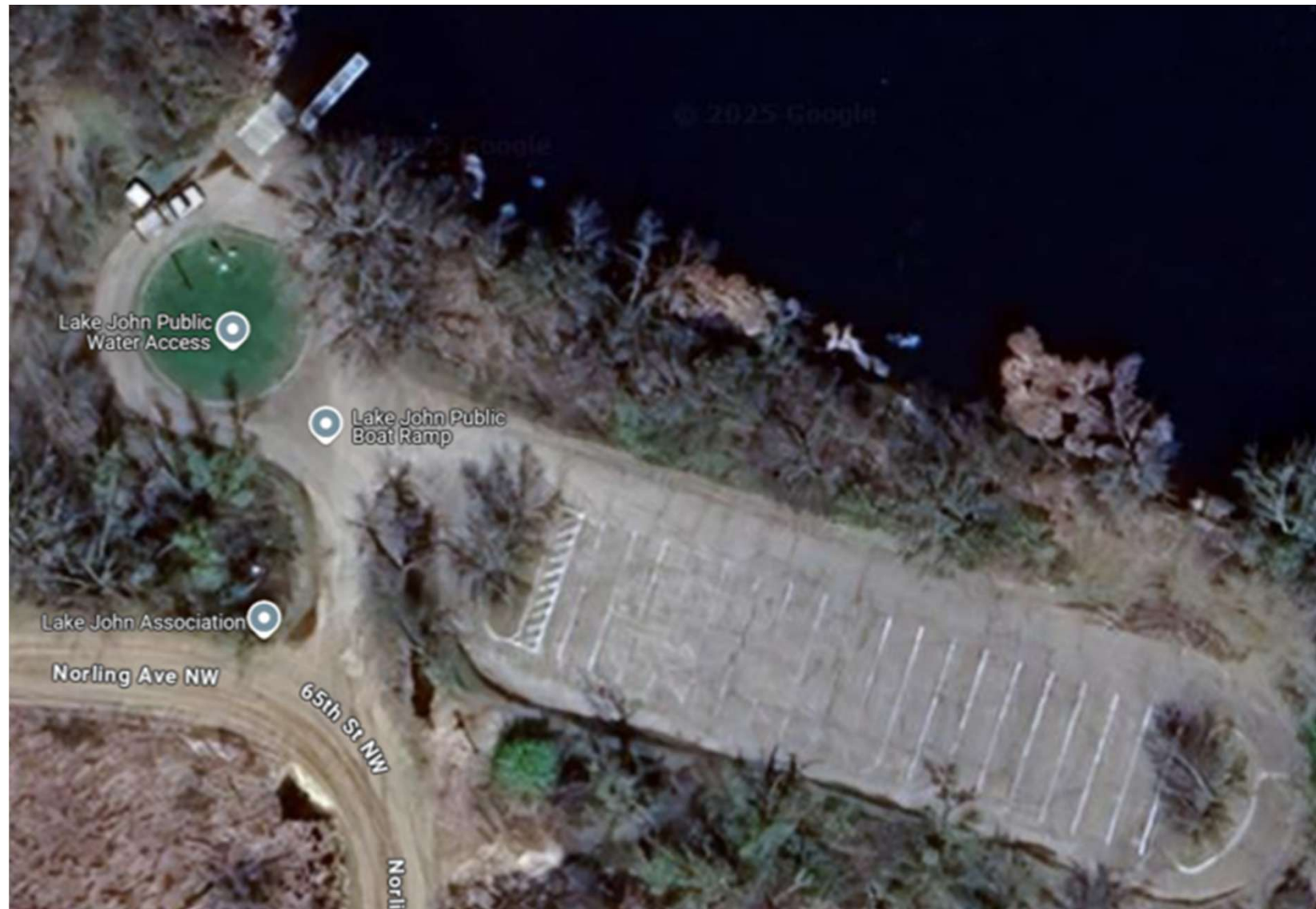




















Next Steps

- Contact “owner” of the launch if non-DNR for approval
- Take pictures of your launch and note preferred location.
- Draw or capture a map of your boat launch with preferred location.
- Send request to Alicia O’Hare at Wright SWCD.





Thank you!

**Help leave AIS at the launch
in Wright County**

