

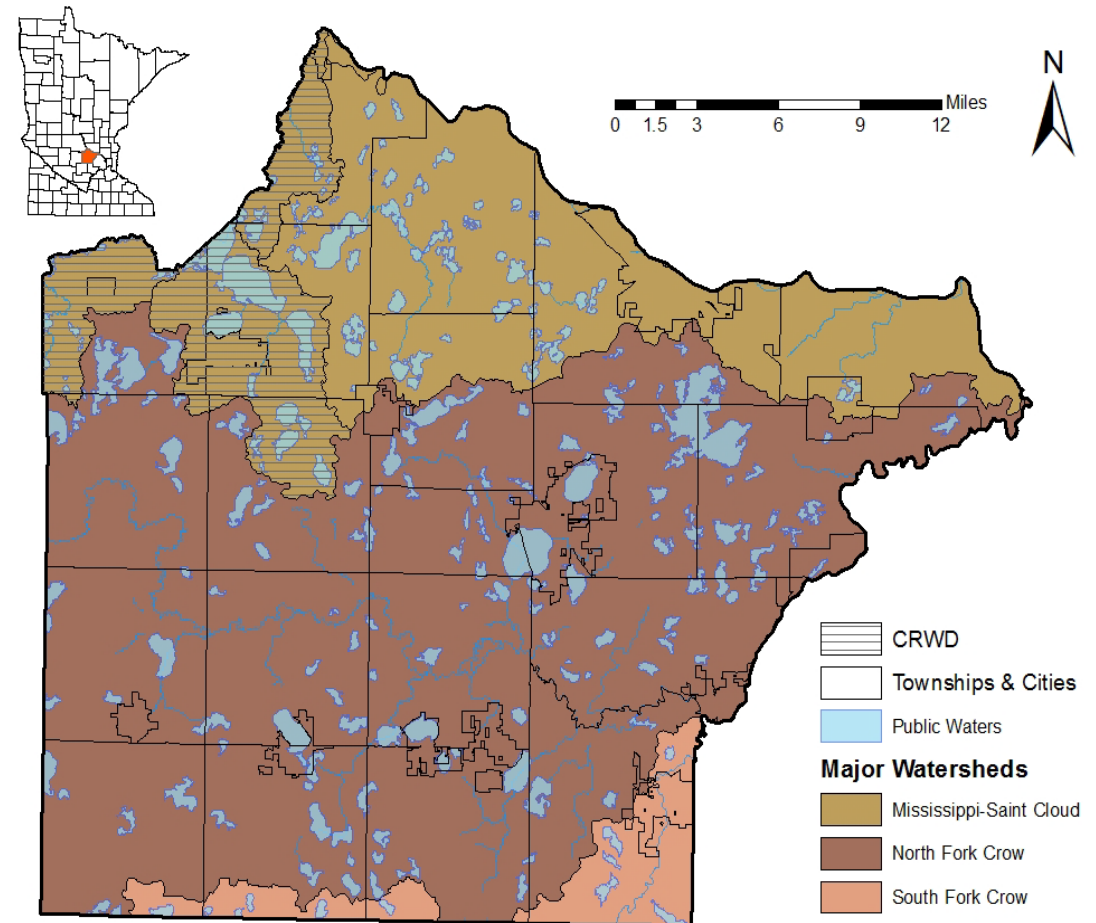


# What's With the Water in Wright?

# One Watershed One Plan



- North Fork Crow
  - Completed plan
  - Current funding cycle is \$1.2 million for entire watershed over 3 years
- Mississippi-Saint Cloud
  - Applying for planning grant
- South Fork Crow
  - Applying for planning grant



# Lake Monitoring



- Same cooler pick up/drop off format as last year
- Invoices will be in the (snail) mail shortly
- Please check your equipment
- I have stoppers if anyone needs one
- Sechi discs come from MPCA
- Cooler Pick up starts May 10!
- First Sample May 17!



# New Toy!



- The SWCD now has a pocket Orthophosphate meter
- It is a simple test that will measure the dissolved phosphorus in about 5 minutes
- Useful if you have a location that you want to test cheaply



# AIS

- Treatment
  - Allocated \$62,800 to 35 grants to 23 organizations
- Inspections
  - Begin May 7
- Bait Compost
  - Need volunteers for maintenance
- Stop Starry
  - Could put 3 CD3 stations
- Other CD3
  - Partnering with others on more CD3



## COMPOST YOUR BAIT HERE

Live bait, fish and bait water can harbor diseases and aquatic invasive species.



### What can be composted?



Before leaving you must drain all water from water-related equipment, including bait containers. It is illegal to release bait into Minnesota lakes and rivers. (Minnesota Statute 84D.10)

For more information or if the bin needs maintenance call Wright SWCD 763-682-1970

Wright Soil and Water



Wright County  
Parks & Recreation

mn  
MINNESOTA

No Trash Here

Spread the word! Take a selfie and tag #icompostbait #cleandraindispose



# Twelve Mile Creek

